

cavity closers – continued

DACATIE - TFR1000 & TFR2000 FIRE RATED INSULATED CAVITY CLOSERS



Warrington
W FIRE
research

TFR1000 & TFR2000 fully insulated cavity closers are an ideal choice for builders and specifiers for the closing of cavities around window and door openings. TFR1000 & TFR2000 has a rigid PVCu profile containing a mineral wool insulation that forms a continuous insulated cavity closer around door and window openings. This prevents cold bridging, damp penetration, air infiltration and condensation. The TFR range can be used on all reveals or cavities and is suitable for all types of windows and doors.

First Fix cavity closer application requires DT4 fixing ties every 225mm.

BENEFITS:

- Up to 60 minutes fire integrity.
- One profile fits cavity widths from 50mm - 160mm.
- Complies with new Part L Building Regulations.
- Reduces risk of condensation, mould and moisture migration.
- Can be used on timber frame construction.

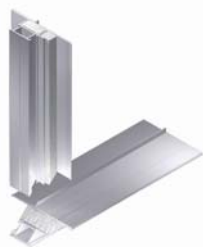
Check Reveal available up to 150mm.

BUILDSPAN CODE	Length m	TFR1000 Cavity Width mm
ICCF2450	2.4	50
ICCF2465	2.4	65
ICCF2475	2.4	75
ICCF2485	2.4	85
ICCF2490	2.4	90
ICCF2410	2.4	100

BUILDSPAN CODE	Length m	TFR2000 Cavity Width mm
ICCF2411	2.4	110
ICCF2412	2.4	125
ICCF2413	2.4	130
ICCF2415	2.4	150
ICCF2416	2.4	160

BUILDSPAN CODE	Description	Unit of sale
ICCDT4	DT4 Ties	Bag of 100

DACATIE - 2000 FRAME FORMERS



DACATIE 2000 Frame Formers provide an accurate template for window and door reveals, saving time on site. Additionally, formers close and insulate the cavities. A Dacatie Frame Former replaces the timber former and acts as a brick template for window and door openings. They are factory assembled using CB1 corner brackets (3 or 4 sided), to suit cavity widths 50mm - 140mm, in 5mm increments. The Frame Formers can be used with all window types to accept snap in or traditionally fixed frames. The Former eliminates the need for site fabricated timber templates. The time savings and increased speed of construction are significant when using Dacatie Frame Formers.

First Fix cavity closer application requires DT4 fixing ties every 225mm.

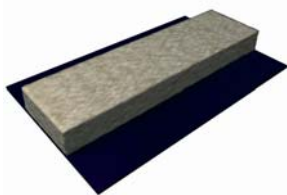
BUILDSPAN CODE	Description	Unit of sale
ICCDT4	DT4 Ties	Bag of 100

BENEFITS:

- Complies with new Part L Building Regulations.
- Fully Insulated.
- Certified to all weather ratings.
- Windows fitted using snap-in system or traditional methods.
- Saves time on site.

Cavity widths up to 140mm available on request.

DACATIE - DACABLOCK FIRE RATED INSULATED DPC



Dacablock is an insulated polyethylene DPC used when traditional block return construction is employed, helping to prevent heat loss and water penetration around window and door reveals. Easily installed as the brickwork is completed. Dacablock is manufactured with mineral wool that has a 60 minute fire integrity rating.

BENEFITS:

- Easy to cut on site.
- Economical solution.
- Prevents water penetration.
- Can be installed as the brickwork progresses.
- Available in various sizes.
- Overcomes cavity width variations.
- CFC & HFC free insulation.
- Dacablock provides 60 minutes fire integrity.

BUILDSPAN CODE	Size mm	Length m
ICFR165	165 x 100 x 25	1.2
ICFR225	225 x 150 x 25	1.2

Other sizes are available on request.

Warrington
W FIRE
research